

Mentor SILVA CUP 2023

International Orienteering Event

Enjoy 3 days of

wild
Orienteering
in Romania!

06-08 October 2023

Curtea de Argeş - Argeş County

Sprint, 7 Legs Mixed Relay & Middle WRE



XLAB SOLUTIONS



FEDERAȚIA ROMÂNĂ
DE ORIENTARE



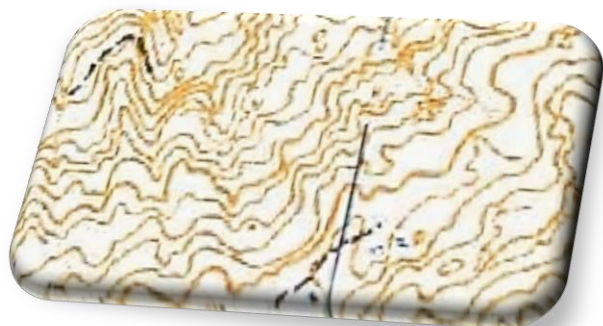
Mentor
SILVA

mentorsilva.ro

Enjoy 3 spectacular races in
Curtea de Argeș, Romania,
06 – 08 October 2023

General information

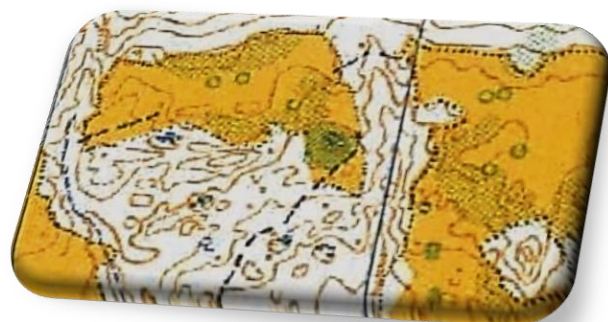
3 Days Event Mentor Silva Cup 2023.



▲ Sprint

▲ 7 Legs Mixed Relay (2nd edition)

▲ WRE Middle Distance



Organizers

Main organizer: Mentor Silva Club Bucharest – <https://mentorsilva.ro>

Sprint co-organizers: Asociatia Zimbrul Carpatin and CS Ecosport

National controller: Niculina MAIORESCU

I.O.F. Adviser: Gabriel MAIORESCU

Sponsors and partners:

Calendar of the event

October, the 6th – Sprint, National Championship Sprint Stage Event

October, the 7th - 7 Legs Mixed Relay

October, the 8th – Middle Distance – World Ranking Event (M21E, W21E)

Preliminary Schedule

Day	Hours	Event	Location
Friday October 6 th	14:00 – 16:00	Registration of participants Distribution of participation kits and sponsors' gifts.	Pitesti
	16.30	Mentor Silva Cup – Sprint National Championship Sprint Stage Event	
Saturday October 7 th	8:00 – 9.00	Registration of participants Distribution of participation kits and sponsors' gifts.	Curtea de Arges - Zigoneni
	10:00	Mentor Silva Cup – 7 Legs Mixed Relay	
Sunday October 8 th	10:00	Mentor Silva Cup – Middle Distance WRE	Curtea de Arges - Zigoneni
	14:00	Prize Giving Ceremony for Sprint, Relay and Middle Distance	

Terrain

- ▲ **Sprint** - Urban area with paved alleys, parks, and buildings
- ▲ **7 Legs Mixed Relay and Middle Distance** – beautiful orienteering challenging forest, hilly, with intricate contour details. New map.

Classes and Rules

▲ Sprint - National Championship Sprint Stage Event

MW12, MW14, MW16, MW18, MW20, MW21E, MW35, MW40, MW45, MW50, MW55, MW60, MW65, MW70, MW75, MW80, Open, Open Family

▲ 7 Legs Mixed Relay

- Relay teams may be formed of athletes belonging either to the same club, or to other clubs. However, every relay must include **at least 3 female** athletes.
- Every team will align 7 relay athletes, running in the order and classes mentioned below:

Relay leg	Category	Equivalent
1	Kids 1	M/W 12
2	Masters 2	M/W 55
3	Kids 2	M/W 16
4	Juniors	M/W 20
5	Masters 1	M/W 45 – 50
6	Elite 2	M/W 35 – 40
7	Elite 1	M/W21

- Every relay team must have a captain (it could be the coach or other person). The captain will decide the distribution of runners in his relay, according to the required order, taking into consideration that at least 3 female athletes must run the relay.
- Every captain may invoke the right for “Jolly Joker”, only one time, during the 3rd leg. If the relay team decides they have lost too much time in the first three legs, they may ask for Early Elite. This means that either Elite1 or Elite2 may run in the 4th leg and, instead, the Junior will take the 6th or the 7th leg. The captain’s decision must be communicated to the organizer during the 3rd leg, before the 3rd leg runner arrives at the spectators’ control.

▲ WRE Middle Distance

The classes for Mentor Silva Cup Middle Distance race are:

MW12, MW14, MW16, MW18, MW20, MW21E, MW35, MW40, MW45, MW50, MW55, MW60, MW65, MW70, MW75, MW80, Open, Open Family.

Entry fees

Race	Classes	Until 1 July 2023	Until 1 August 2023	Until 25 September 2023
Sprint	M/W 12, 14, Open, Open Family	3 EUR	3 EUR	4 EUR
	M/W16,18, 65, 70, 75	6 EUR	6 EUR	7 EUR
	M/W 20, 21, 35, 40, 45, 50, 55, 60	8 EUR	8 EUR	9 EUR
Middle Distance	M/W 12, 14, 16	6 EUR	8 EUR	10 EUR
	M/W18, 20, 35, 40, 45, 50, 55, 60, 65, 70, 75, Open, Open Family	8 EUR	10 EUR	12 EUR
	M/W21	10 EUR	12 EUR	15 EUR
Relay	The fee is for the entire 7 athletes relay team.	210 EUR	230 EUR	250 EUR
		The relay consisting of 7 members from the same club finishing the race, will receive back a bonus of 200 EUR.		

- Registration will be through platform orienteeringonline.net
- If needed, entries can be submitted via our e-mail: mentor_silva@yahoo.co.uk
- Elite classes – M/W21, just for the third stage – MD, should make an additional entry through the IOF Eventor Page.
- Entry is not valid until the entry fee is received in the organizer's account.
- All fees have to be paid either in EURO, or in Romanian currency (RON), in advance, to bank account, until the deadline for entries.

- No entries will be accepted for Relay after the last deadline. For Middle Distance, later entries may be accepted if vacant positions in the start list are available.
- Invoice shall be sent by email 3 days after the payment has been registered.

Banking details

Asociatia Club Sportiv Mentor Silva

Adress: Calea Mosilor 310, Bl.58BIS, Ap. 32, Sector 2, Bucharest

- For **EUR** payments:
IBAN: RO85 BTRL EURC RTOP 8968 1701
- For **RON** payments:
IBAN: RO03 BTRL RONC RTOP 8968 1701

Ceremonies and awards

Prize Giving Ceremony will be held on 8th of October, starting with 14:00. The stages will be awarded separately, thus:

▲ 7 Legs Mixed Relay

1st place – 2500 Eur + entry fee paid for the future edition of Mentor Silva Cup for Kids 1, Kids 2 and Juniors.

2nd – 1500 Eur + entry fee paid for the future edition of Mentor Silva Cup for Kids 1 and Kids 2.

3rd – 1000 Eur entry fee paid for the future edition of Mentor Silva Cup for Kids 1.

▲ WRE Middle Distance and Sprint

The first three places for all categories will receive diplomas and medals. The first 6 places of W/M21 WRE will be awarded separately.

Bonus

The relay consisting of 7 members from the same Club, finishing the race, will receive back a bonus of 200 EUR.

The relays attending three successive editions of Mentor Silva Relay Events, preserving all along the 3 years at least 4 athletes, will receive a bonus of 500 Eur.